

the new **KING!**



– impossible?

**finetexx**

smooth power



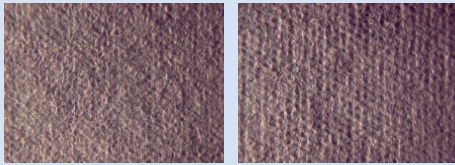
**STOWE®**

**WEAVEXX®**

**HUYCK.WANGNER®**

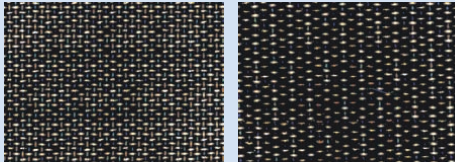
# The new KING for sophisticated tasks!

... trackless sheet forming at highest efficiency.

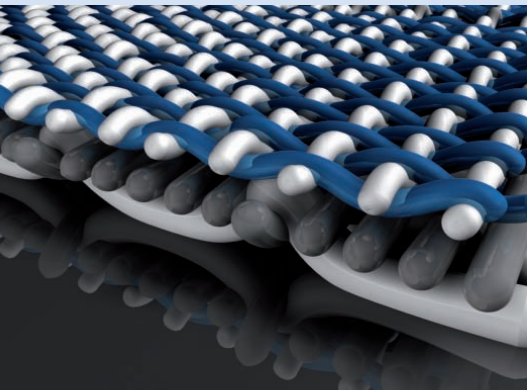


finetexx

Standard SSB



Hand sheet and Nanofocus comparison



## The next milestone after SSB

finetexx is based on a unique new concept providing Engineered Drainage Channels (EDC) for outstanding performance attributes. With a higher concentration of machine-side yarns and fewer sheet-side machine direction yarns combined with more cross-machine direction yarns, finetexx creates a drainage channel geometry like no other fabric. This approach enables very high surface open area along with very high fiber support – accompanied by high stability thanks to the finetexx weave structure.

## Benefits

By combining controlled drainage with very high sheet-side open area, finetexx excels at providing enhanced formation and retention at high drainage rates which enable higher sheet quality, reduced energy consumption, and a wider operational window of the former. In addition, the extraordinary high fibre support in combination with the smooth dewatering provides an almost marking free sheet.

## Results

### Reduced marking

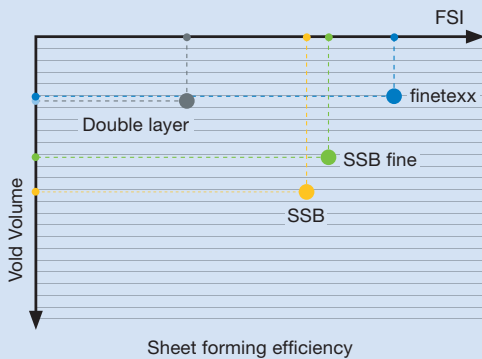
- Extremely high sheet support
- Practically no marking visible in the sheet

### Drainage

- Large surface open area on paper side and low caliper ensure high drainage capacity
- Controlled initial drainage by Engineered Drainage Channels (EDC)
- Optimum build up of initial fiber matt, facilitating further drainage along the former – leveraging higher dryness

### Retention

- High CMD orientation on paper side supports the fiber retention
- High free surface on paper side improves the hydrodynamic retention of fines and Fillers



exclusively from Huyck.Wangner  
[www.xerium.com](http://www.xerium.com)

# finetexx

smooth power



STOWE®

WEAVEXX®

HUYCK.WANGNER®